

WEHRLE DEVELOPMENT, LTD.

WWW. WEHRLE DEVELOPMENT.COM

CALL TODAY FOR MORE INFORMATION 419-841-5363

408 Somerset Ln.. Temperance, MI. 48182

Lot #82 Prairie Woods -- 2118 Sq. ft. - 2 story,
4 bedrooms, 2-1/2 baths, basement, 2nd floor
laundry room. Granite counters kitchen.

Hardwood floors kitchen, dinette, ½ bath and
Foyer. Ceramic tile all baths and laundry rm.
open floor plan, custom cabinets, 12X12 patio,
black appliances and ceramic fireplace surround.

You still have time to choose your color choices



FRONT ELEVATION

Price \$229,900 Sold

This beautiful 2 story includes a master bedroom and bath with a large walk-in closet. Upgraded contemporary cabinets with granite counters and black appliances and black wrought iron spindles. The exterior of this home includes covered front porch, seeding entire yard and stone exterior.

Customized for your needs!

We offer many opportunities to create a living space flexible for your needs. Our up to date interiors are custom and provide you with more choices, and more colors.

We offer co-operate with real estate agents

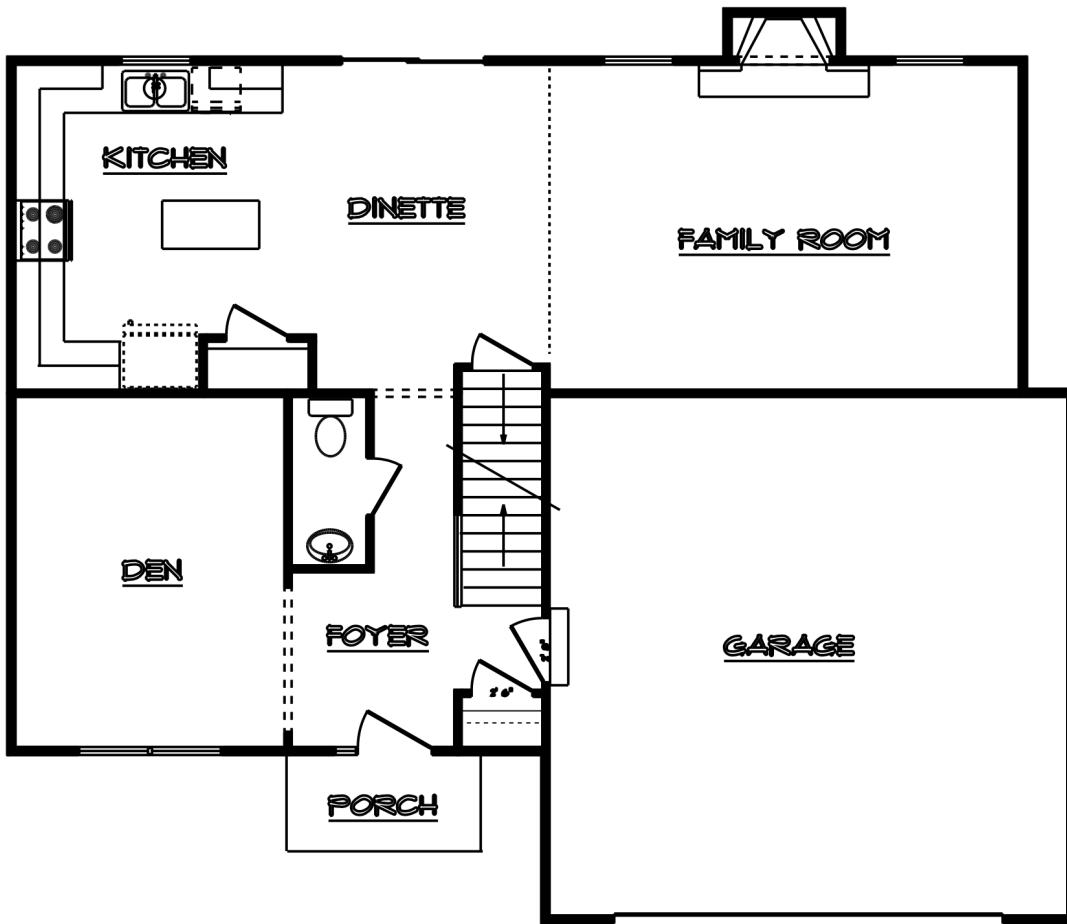
Lots Available for you to Build!

We have many lots to choose from. Reserve your lot today and let us build your new home!

Sales Consultant

Cyndi Sculfort 419-367-5227

email: cyndi@wehrledevelopment.com



FIRST FLOOR PLAN

